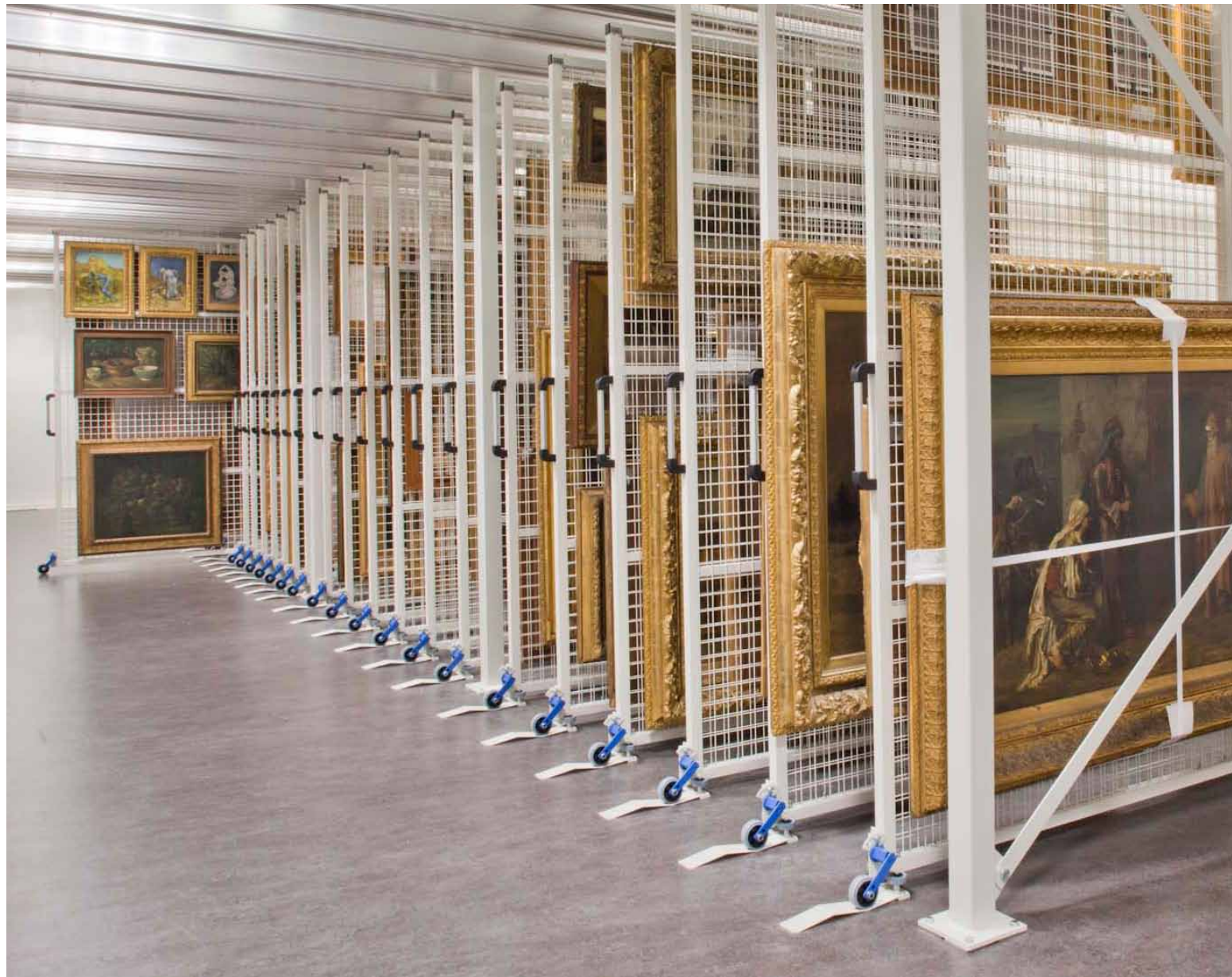


# Museum Solutions



 **bruynzeel** storage systems

FOCUS ON CUSTOMER SATISFACTION

## Museum Solutions

### All information directly accessible

The key issue when designing a museum repository is to preserve an irreplaceable collection. In addition, the collection should be accessible at all times. Bruynzeel has extensive experience in furnishing museum repositories.

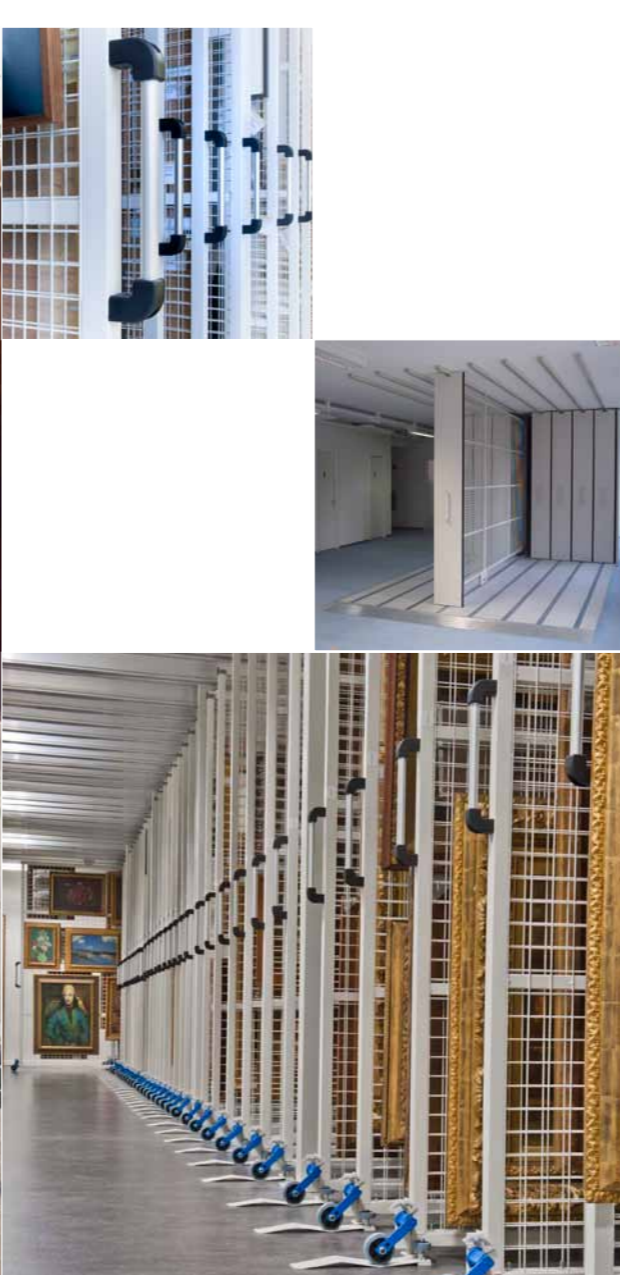
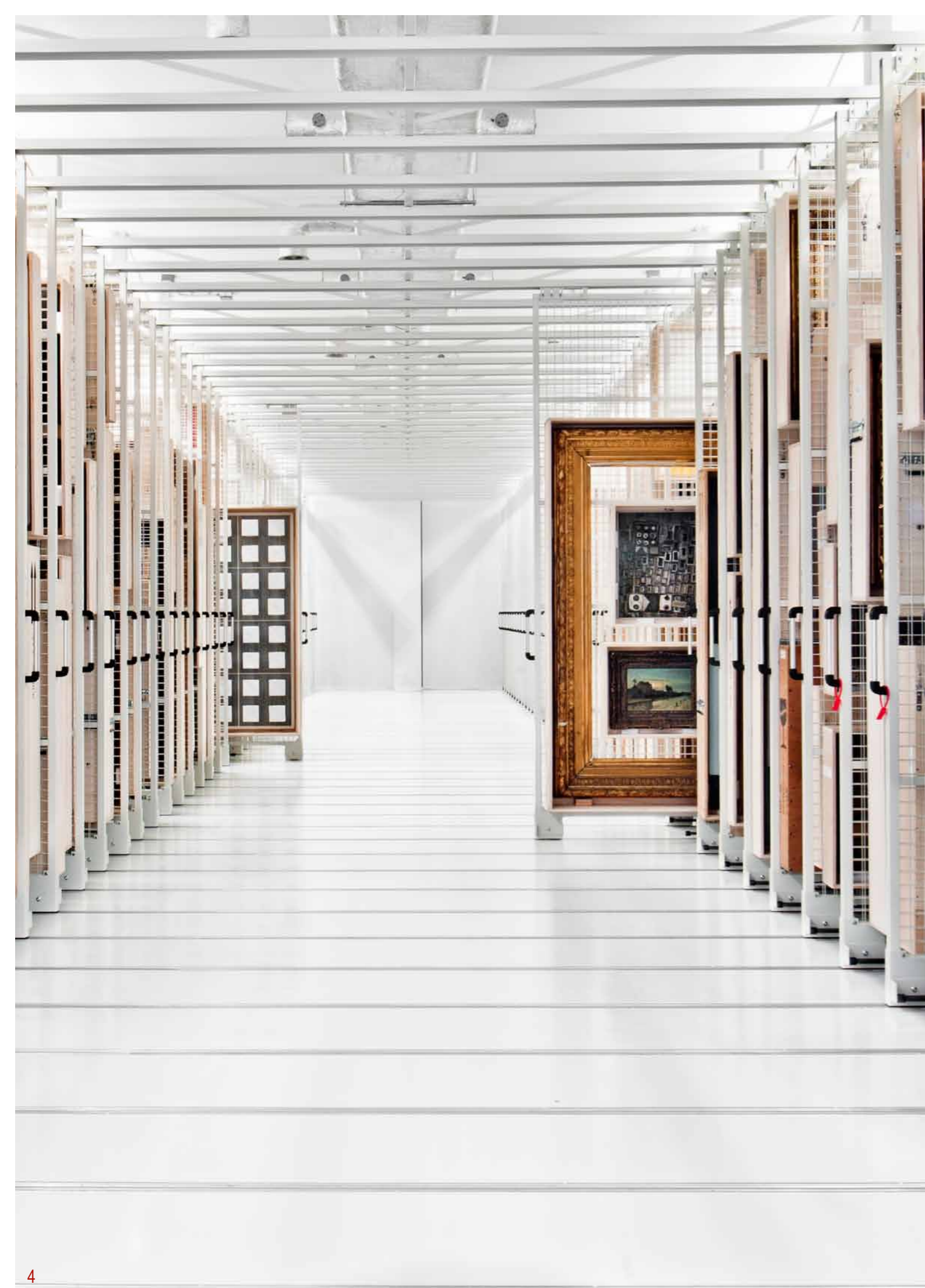
Our advisors will be happy to help you reach the best solution. A solution that will meet the specific requirements of your collection, its users, and the dynamics of the environment.

### MAS | Museum Aan de Stroom

## “A unique look behind the screens”

The MAS is housed in a mesmerising building, and tells the extraordinary story of Antwerp's historical links with the outside world. The MAS communicates this story in a number of ways, including the “Visible Storage”. The Visible Storage offers a unique look behind the scenes of the museum and also introduces the visitor to its rich ‘collection history’.

From behind a transparent wall, the public can view the pieces of the MAS that are not currently on display. The treasured possessions of eminent collectors have been brought back to life. The Visible Storage features Compactus® Double Decker racks, cabinets and ArteStore painting racks created by Bruynzeel. They have been filled to the rafters with 180,000 collectors' items that are kept in optimum storage conditions.



## ArteStore Penda, Terra and Rota

### Choose the storage solution that suits you best

#### **Pull-out painting frames: efficient use of space**

A major advantage of pull-out painting frames is that the paintings are easily accessible, while efficient use is made of the available space. If you need to view a certain painting, only the paintings in the frames concerned are moved.

Pull-out painting frames are available in three versions. Fully suspended; moved on floor-fixed level rails, or moved along the floor on wheels.

#### **ArteStore Penda**

Pull-out painting frames move virtually vibration free and are extremely stable. A major advantage of this system is that the floor surface is uninterrupted by rails. This is important if the floor also serves as a transport route. The dimensions of the wire-mesh walls are matched to the size of the objects and the available space.

#### **ArteStore Terra**

These painting frames also move virtually vibration free and are extremely stable. A steel construction is rarely required, since the guide rails on the ceiling are not weight bearing. With this system, the dimensions of the wire-mesh walls are also matched to the size of the objects and the available space. Alternatively, the rails can be set flush into a concrete floor.

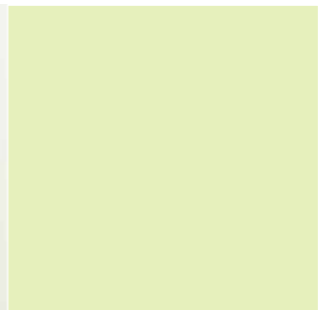
#### **ArteStore Rota**

If customisation and vibration are less important criteria, this system will offer a cost-efficient solution. The extent of vibration depends on the smoothness or roughness of the floor surface. The system is available in standard sizes.

#### **ArteStore Penda, Terra and Rota, pull-out painting frames**

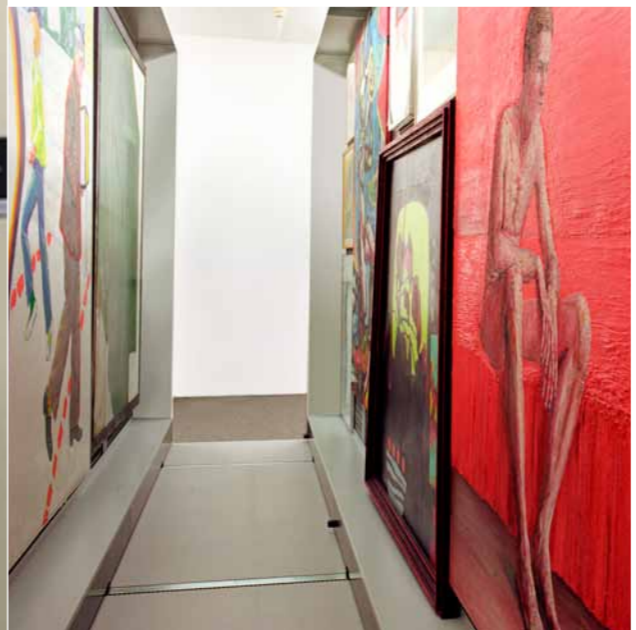
- Space-saving and easily accessible.
- Only a part of the collection is moved.
- No air flow around the collection during movement.
- Customised.





**ArteStore static painting frames**

- Flexible dimensions.
- Extremely stable.



**Compactus® ArteStore mobile painting frames**

- Space-saving and easily accessible.
- Available in various floor types: low emission to zero emission.
- Rails can be set flush into a concrete floor.



Compactus® Dynamic ArteStore.

**ArteStore static painting frames and Compactus® ArteStore**

**Matching any specific situation**

**ArteStore static painting frames: focus on flexibility**

Static painting frames are available in different sizes, so that they will neatly fit into the available repository space. They offer a cost-efficient storage solution, suitable for intensive use. These storage solutions are used for temporary storage situations such as transit and quarantine storage or art libraries.

**Compactus® Dynamic ArteStore and Compactus® Dynamic Pro ArteStore: focus on protection**

Mobile painting frames can be equipped with an electronic Compactus® Dynamic or Compactus® Dynamic Pro drive. In addition to maximum storage capacity, this will also provide optimal protection of your collection.

- Low-vibration movement of the mobiles thanks to 'soft start' and 'soft stop'.
- The distance between closed mobiles can be adjusted to suit varying loads so the mobile carriages will never collide.
- To guarantee increased protection for your collection, both systems can be linked to security and climate-control systems, such as fire alarms, lighting and ventilation. Automatic reaction of the mobiles to system activation can be integrated in the operating software.
- Compactus® Dynamic Pro offers a ventilation mode. After closing time the system may be automatically repositioned to provide extra ventilation.

**Compactus® ArteStore, mobile painting frames: focus on storage capacity**

Mobile painting frames, also known as Compactus® ArteStore painting frames, make optimal use of the available space by using only a single aisle. The mobile frames can be moved individually or several at the same time, creating an aisle wherever necessary, thereby virtually doubling your storage capacity.



The special ArteStore hanging brackets, locate in the mesh, and ensure secure suspension.



## Compact racks and Sysco® racks Immediate access to your collection

### Compact and Sysco® racks: focus on flexibility

Our rack systems are excellent examples of versatile storage solutions. Whether you choose the open Compact rack or the closed Sysco® rack, these modular systems are available in various sizes, so that they can be tailored around the objects to be stored. The shelves are adjustable per 20 mm, meaning that sections of any size can be created. The contents may be stored safely and practically dust-free behind sliding doors.

### Compact and Sysco® racks: eye for detail

Compact and Sysco® systems are distinguished by their stability and durability and the attention devoted to detail. The shelves are easily adjustable. The shelf hooks are concealed underneath the shelves so as not to damage the objects. Racks can be configured into single and double-sided runs.

### Anti-microbial powder coating: for extra protection

Compact and Sysco® racks can be provided with a special antimicrobial powder-coating finish. Ideal for storage that requires extra protection against organisms such as bacteria, fungi, algae and yeast. The anti-microbial coating minimises the risk of cross-contamination from surface contact.

If you require extra storage space, these systems can also be transformed into mobile units and slotted into a Compactus® system.



- Compact and Sysco® racks**
- Available with various dimensions.
  - Variable section heights.
  - Tailored to your collection.





## Cabinets of drawers Convenient storage

### Cabinets of drawers: focus on protection

Should your collection be stored lying flat? Should it be protected against dust and light? If this is the case, it is best stored in drawers. Drawers are available in a huge range of dimensions and specifications, varying in depth, length and in width. Drawer cabinets provide clear and easy access. Drawers may be pulled out completely, allowing safe arrangement of contents.

### Cabinets for storage of prints: highly functional

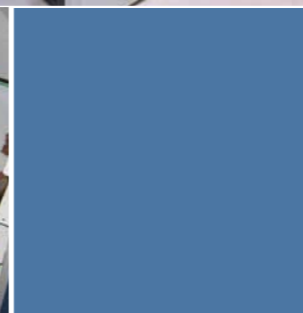
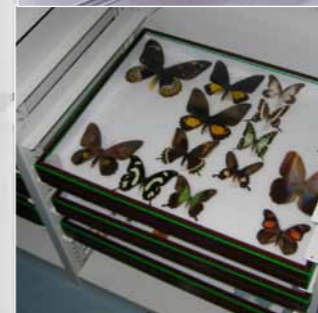
Cabinets for storage of prints have shelves that can be completely slid in and out. They are ideal for individual storage of prints and pastels. A major advantage of this system is that the prints can be transported on the actual shelves. Print cabinets can be closed using sliding doors.

Need extra storage space? No problem. Bruynzeel drawers can be converted into a mobile system by placing them inside a Compactus® system.



### Cabinets of drawers

- Available in a wide range of dimensions.
- Protected against dust and light.
- Customised.





## Long span shelving, cantilever racks, pallet racks, panel racks and carpet racks

### Tailored to your collection

Depending on the shape and weight of the objects to be stored, we can offer the safest possible storage solution for these objects.

#### Long span shelving and pallet racks: stable storage of heavy objects

Long span shelving is used for heavy objects. The long sections are easily accessible, adjustable per 50 mm, and have a load-bearing capacity of several hundreds of kilogrammes. If the objects are even heavier, pallet racks are ideal. These stable and versatile systems will guarantee safe and compact storage of the heaviest objects.

#### Panel racks, cantilever racks, carpet racks: a specific solution for any object

For long and flat objects, panel racks will provide a space saving and safe solution. For long objects, the cantilever racks will prove highly efficient. Carpet racks are used for carpet rolls. If required, they will provide a functional solution for large-sized canvasses.

If you require extra storage space, these systems can also be transformed into mobile units and slotted into a Compactus® system.



Long span shelving on Compactus®



Cantilever racks

#### Long span shelving, cantilever racks, pallet racks, panel racks, carpet racks

- Safe storage for objects of any weight and size.
- Stable.
- Compact.
- Customised.

Panel racks

Pallet racks

Carpet racks



Stedelijk Museum Amsterdam

## “Designing a repository requires a keen eye for detail”

Situated in the Westelijk Havengebied, the brand new repository of the Stedelijk Museum has an eye-catching yet sober and modest appearance. The repository covers an area of 9,000 square metres, 5,500 square metres of which is used to store valuable works of art. The repository is equipped with the latest technology to ensure that valuable works of art are properly stored. It comprises 8 kilometres of rails and 650 mobile painting racks. The pallet racks have a total storage capacity of around 400 running metres, and there are also shelving units totalling 1,000 running metres. The majority of these are mobile units in order to make optimum use of the available space.

### Partnership

## The power of partnership

#### Focus on partnership

Finding efficient and sustainable storage solutions for your museum requires careful consultation and is the key to designing a tailored solution that matches your needs. Because we have our own Research and Development department and an experienced team, we are able to adapt our products to your requirements and market trends. You spur us on to continue developing better and more creative solutions.

#### Focus on quality

Choosing Bruynzeel means quality is guaranteed. Our products meet all the important international quality standards, awarded by independent experts.

#### Focus on sustainability

Bruynzeel is a market leader when it comes to sustainability. Our factory in the Netherlands has been awarded ISO 9001 and ISO 14001 certification. ISO 14001 certification shows that we comply with environmental legislation and regulations, and that we constantly endeavour to reduce our environmental impact. This means that sustainability not only forms part of our day-to-day business, but also relates to our products themselves. We would be delighted to assist you in achieving your sustainability goals by offering you durable products and space-saving concepts.

### References

The Bowes Museum (UK)  
 Caixa Geral Depositos (P)  
 Château de Versailles (F)  
 Ingres Museum (F)  
 Historisches Museum Bern (CH)  
 MAS Museum Aan de Stroom (B)

Museum Brailei (RO)  
 Museum de la Memoria (CL)  
 Museum Olteniei Craiova (RO)  
 Museumsdepot der Landeshauptstadt München (D)  
 Museumsdepot Schweinfurt (D)

Museumslandschaft Kassel (D)  
 Museum Rodin (F)  
 National Museum Naturalis (NL)  
 The Nordic Heritage Museum (S)  
 Perth Museum (UK)  
 Rijksmuseum Amsterdam (NL)

S.M.A.K. (B)  
 Sparkasse Dachau (D)  
 Stedelijk Museum Amsterdam (NL)  
 Tropenmuseum (NL)  
 Valance House Museum (UK)



<p><b>Bruynzeel Storage Systems bv</b>  Industrieterrein 7  Postbus 7118  5980 AC Panningen - The Netherlands  Tel.: +31 (0)77 306 90 00  Fax: +31 (0)77 307 81 33  www.bruynzeel-storage.nl  info@bruynzeel.org</p>	<p><b>Bruynzeel Storage Systems</b>  Murdock Road  Dorcan Industrial Estate  Swindon SN3 5HY - United Kingdom  Tel.: +44 (0)800 220 989  Fax: +44 (0)800 220 848  www.bruynzeel.co.uk  enquiries@bruynzeel.co.uk</p>	<p><b>Dexion Polska Sp. z o. o.</b>  Ul. Annopol 4a  03-236 Warsaw - Poland  Tel.: +48 (0)22 210 85 00  Fax: +48 (0)22 210 85 10  www.bruynzeel.pl  info@bruynzeel.pl</p>	
<p><b>Bruynzeel Storage Systems NV/SA</b>  Buro &amp; Design Center  Heizel Esplanade B50  1020 Brussels - Belgium  Tel.: +32 (0)2 479 42 42  Fax: +32 (0)2 479 82 82  www.bruynzeelstorage.be  info@bruynzeelstorage.be</p>	<p><b>Constructor Norge AS</b>  Postboks 363  Sandviksveien 36  1323 Høvik - Norway  Tel.: +47 (0)67 112 600  Fax: +47 (0)67 112 601  www.constructor.no</p>	<p><b>Dexion s.r.o.</b>  Vlastibořská 4  193 00 Praha 9  Czech Republic  tel.: +420 244 090 411  fax: +420 244 090 412  www.bruynzeel.cz</p>	
<p><b>Bruynzeel Rangements SAS</b>  1 rue Alfred Kastler  67201 Eckbolsheim - France  Tel.: +33 (0)3 882 696 00  Fax: +33 (0)3 882 696 01  www.bruynzeel.fr  info@bruynzeel.fr</p>	<p><b>Constructor Sverige AB</b>  P.O. Box 55043  Bergsjödalen 60  400 53 Göteborg - Sweden  Tel.: +46 (0)31 771 96 00  Fax: +46 (0)31 771 96 96  www.constructor.se  info.se@constructor.se</p>	<p><b>Dexion Kft.</b>  2040 Budaörs,  Komáromi u. 22.  Hungary  Tel.: +36 (06) 23 428 166, -167  Fax: +36 (06) 23 428 175  www.dexion.hu  dexion@dexion.hu</p>	
<p><b>Bruynzeel Archiv &amp; Bürosysteme GmbH</b>  Moselstraße 18  41464 Neuss - Germany  Tel.: +49 (0)2131 409 90  Fax: +49 (0)2131 409 9199  www.bruynzeel.de  info@bruynzeel.de</p>	<p><b>Constructor Danmark A/S</b>  Rorupvej 1  4320 Lejre - Denmark  Tel.: +45 (0)46 328 008  Fax: +45 (0)46 328 118  www.constructor.dk</p>	<p><b>Dexion Storage Solutions SRL</b>  Strada Campului, Nr. 1A  Rasnov, Brasov 505400  Rumania  Tel.: +40 (0)372 683 400  Fax: +40 (0)372 683 499  www.bruynzeelstorage.ro</p>	
<p><b>Compactus &amp; Bruynzeel AG</b>  Zürcherstrasse 350  8500 Frauenfeld - Switzerland  Tel.: +41 (0)52 724 07 24  Fax: +41 (0)52 724 07 44  www.compactus.ch  info@compactus.ch</p>	<p><b>Constructor Finland Oy</b>  Kasteninkatu 1  P.O. Box 100  08151 Lohja - Finland  Tel.: +358 19 362 51  Fax: +358 19 362 5333  www.kasten.fi  sales.finland@kasten.fi</p>	<p><b>Dexion, spol. s r.o.</b>  Chmeľová dolina 27  949 01 Nitra - Slovakia  Tel.: +421 (0)37 651 71 09  Fax: +421 (0)37 652 68 22  www.dexion.sk  www.bruynzeel.sk  dexion@dexion.sk</p>	

## Members of the Constructor Group



 **bruynzeel** storage systems

## FOCUS ON CUSTOMER SATISFACTION